



Thank you for purchasing our Power Base by NKK™. This unit is designed to motorize the operation of various tools made by Nancy's Knit Knacks. The first of which is the Heavy Duty Ball Winder™.

The unit incorporates a number of advanced technology features including: a microprocessor-based controller for managing the motor's speed and control panel functions, a membrane switch control panel, a high torque DC Gearmotor which can run for extended periods of time without overheating, and a worldwide rated AC Adapter that delivers safe DC power to the unit. It also includes the capability to use an optional foot pedal that controls the on/off function and it can also accept signals from our Electronic Yarn Meter™.

If you have time, watch the 38 minute video which is online at www.nancysknitknacks.com under the resource tab (videos).

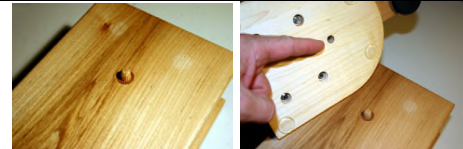
Setup Instructions

Remove all parts from the box

- Power Base (wooden box)
- Power supply and cable
- Wooden Guard
- Pulley for Ball Winder. Units sold by retailers may have 2 pulleys (3/8" and 10 mm) which allows the end user to mount pulley on both vintages of ball winders (install the one that fits the best).
- Hardware bag which contains: 2 O-ring belts (clear on High Torque version), a 1/8" Allen Wrench, 2 clamp blocks, 2 L Bolts (small) and 2 5/16-18 wing nuts

Position the Power Base on the edge of your table with the Control Panel facing you. Insert the Large L Bolts that came with your Ball Winder (HDBW) into 2 of the 6 available slots on the Power Base. Attach the Clamp blocks and wing nuts that were used on your HDBW, and then tighten them. You must secure the Power Base to a table surface to prevent accidental movement.

Position your HDBW on top of the Power Base (remove handle first). Carefully align the 3/8" dowel protruding from the top of the Power Base into the hole in the bottom of your HDBW. If the serial number label is covering the hole, then poke through the label. If your HDBW has S/N 06-xxxx-xx and there is no visible hole, then you need to remove the Ball Winder base and drill through the hole from the other side of the base (from the inside surface. Use a 3/8" drill bit. If you need to drill through the BW base, put a piece of wood under the base when drilling through it to prevent the base from splintering.



Attach the 2 small L Bolts with clamp blocks in the holes in the side of the Ball Winder. The blocks will fit into the opening on the Power Base. Tighten the wing nuts. You must secure the HDBW to the Power Base at all times.



Attach the pulley to the Ball Winder shaft. Carefully position the slot in the pulley over the metal pin that goes through the shaft. Then visually align the lower motor pulley with the upper pulley that you just installed. The pulleys must be in direct alignment. Then tighten the set screw on the HDBW pulley.



Ensure that the pin in the shaft is fully engaged in the upper pulley before tightening the set screw.

Note – the pulley replaces the handle on the ball winder. To use the hand in the future, simply re-install the handle.

Belts - Please refer to the separate sheet that describes installing the Clear belts onto the Ball Winder and Power Base

Plug the power supply into the wall jack and then connect the power supply to the back of the Power Base. If you have our foot pedal, connect it to the appropriate jack. Then throw the power switch on ("I" is on, "O" is off). Check to see that the green LED is lit on the control panel. If it isn't lit, re-check all of your connections. Contact us if it never lights up.



The unused jack is for Electronic Yarn Meter

Then tap the Jog button and verify that the pulleys, belt and ball winder are rotating. You specifically want to verify that the pulleys and belts appear to be running freely with no restrictions or other problems. If everything looks good, then position the Guard on the unit. TAP THE STOP BUTTON FIRST. Always insert and remove the Guard by inserting it straight down or straight up so that the 2 locating dowels fit properly into the holes in the top of the Power Base. NEVER pull the top of the Guard backwards or the dowels could be damaged.



The Power Base is now ready to be used but follow these general guidelines:

1. Always aim the yarn guide arm on the HDBW toward the swift or bobbin/cone holder.
2. Consider starting the ball in JOG Speed to ensure that the yarn ball begins to be formed around the middle of the spindle (force it down from the yarn slot with your finger). This will create a better ball middle. Wrap the first 10-20 wraps of yarn snugly around the spindle by applying tension to the yarn. Use the built-in Yarn Tensioner on the HDBW to help in this area. If you do not have the new Tensioner, then we highly recommend that you purchase this upgrade from NKK. The Tensioner was introduced May 2008 and is a refinement to the HDBW's operation.
3. If you use the tensioner properly by adding the correct amount of tension to the yarn, you will not have to hold the yarn in your hand making the Power Base/HDBW combination a truly hands-free experience.
4. Once the ball begins to form, observe the level of tension that the system is applying to your ball and then either increase it or decrease by adjusting the HDBW Tensioner. If you do not have the tensioner installed, then hold the yarn in your hand prior to it entering the HDBW yarn guide.
5. If for any reason the yarn gets hung up at the swift (or at the HDBW) and the winding action stops, then tap the Stop button and correct the problem before resuming. The O-Ring belt will automatically slip if there is a problem but do not allow the unit to run for an extended period when the belt slips on the HDBW because it could cause excessive motor brush wear.
6. **To reverse direction** (to clear a problem or unwrap some yarn), tap the Jog Button twice. The unit will go in reverse (but only while in Jog speed). You cannot go into reverse while in Run speed. On each successive tap of the Jog button the unit will alternate direction.
7. **To change speed** in either Jog or Run mode, just tap the Up or Down Speed arrows. Each press of the speed button will make a 10% change in speed. There are 5 speed levels in Jog mode and 10 speed levels in Run mode. The spindle arm on the BW runs at 550 RPM net.
8. **Save Speed Settings** – If you find a speed that you like and it works well for the yarn that you are winding, then you can SAVE the speed setting to eliminate the need to adjust the speed on the next ball. To SAVE the speed in either Jog or Run mode, you adjust the speed to the level that you like and then tap the SAVE button. You can save 1 Run Speed and 1 Jog Speed. Once you power down the unit the settings will be cleared. You can also force them to clear by holding down the Stop button while simultaneously pressing the Run button. If you save a 2nd speed in Jog or Run mode, it will overwrite the 1st speed that you saved.
9. **LED** – The LED will blink twice when you have reached the end of the speed range and also when you have saved a speed. This is a visual cue to verify that your setting was saved.
10. **Always turn the unit off when not in use for an extended period of time.**
11. **Warranty** – 1 Year for Retail and Commercial use Parts & Labor Limited Warranty (see details)

¹² Motor will need replacement after approx 2000 hrs of operation. Reasonably priced motor replacement kits are available from NKK. The motor is a user replaceable part. Call for price and instructions.